

SPECIFICATIONS

Material

Insulator: PBT, glass reinforced, rated UL 94V-0

Contact: Phosphor Bronze or Brass

Electrical

Current Rating: 1 Amp

Current Resistance: 30m ohm max.

Insulation Resistance: 3000 M OHM min.

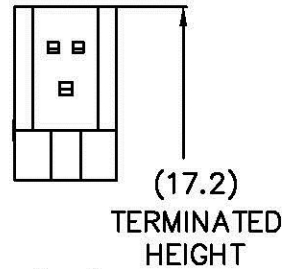
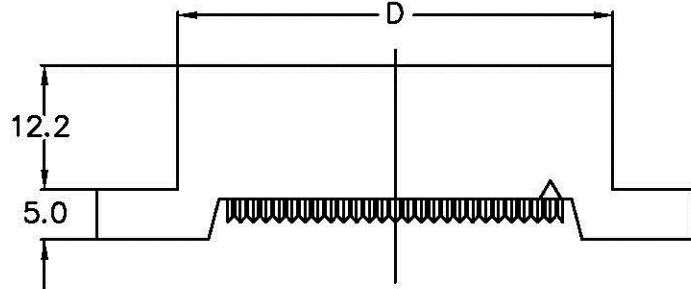
Dielectric Withstanding Voltage: 500V AC for 1 minute

Operating Temperature: -40°C to +105°C

* Terminated with 1.27mm pitch flat ribbon cable

E-C2FE-xx-LF
LEADFREE

RoHS Compliant



POSITION	A	B	C	D
10	43.06	10.16		22.36
14	48.14	15.24		27.44
16	50.68	17.78		29.98
20	55.76	22.86		35.06
26	63.38	30.48		42.68
34	73.54	40.64		52.84
40	81.16	48.26		60.46
50	93.86	60.96		73.16
60	106.56	73.66		85.86
62	109.10	76.20		88.40
64	111.64	78.74		90.94

Allconnectors

www.allconnectors.de
Tel.: 0049 711 7009502
70794 Filzlerstadt - Germany

info@allconnectors.de
Fax: 0049 711 7009504
Kettenerstr. 25

PART NO. E-C2FE-xx

DWG NO. E-C2FE-xx

FILE NO.

UNIT / mm

SCALE 1:1

CHECKED BY CY

DRAWING BY

PROJECTION

TOLERANCES ARE

.X ± 0.2
.XX ±
XXX ±
AWG

DESCRIP TION: Edge card idc type with mouting ear 2.54mm

AREA	REVISIONS	HK	DATE